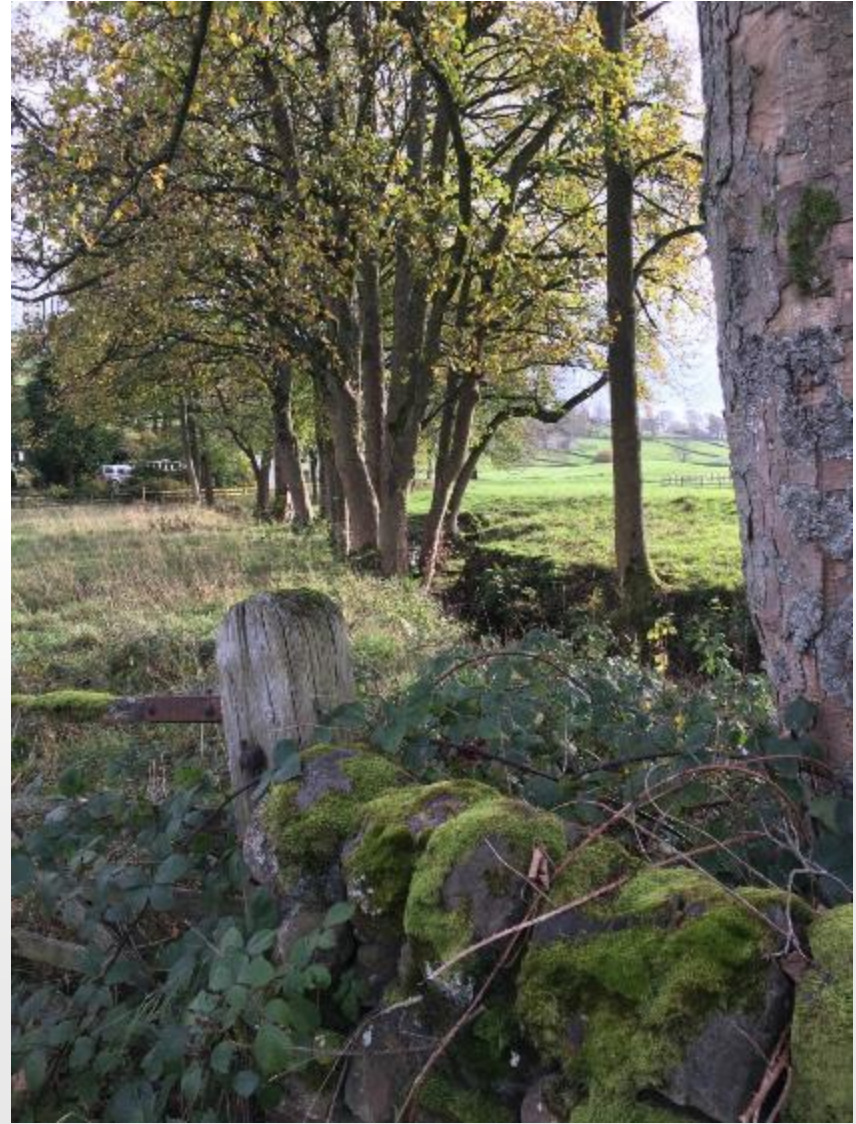
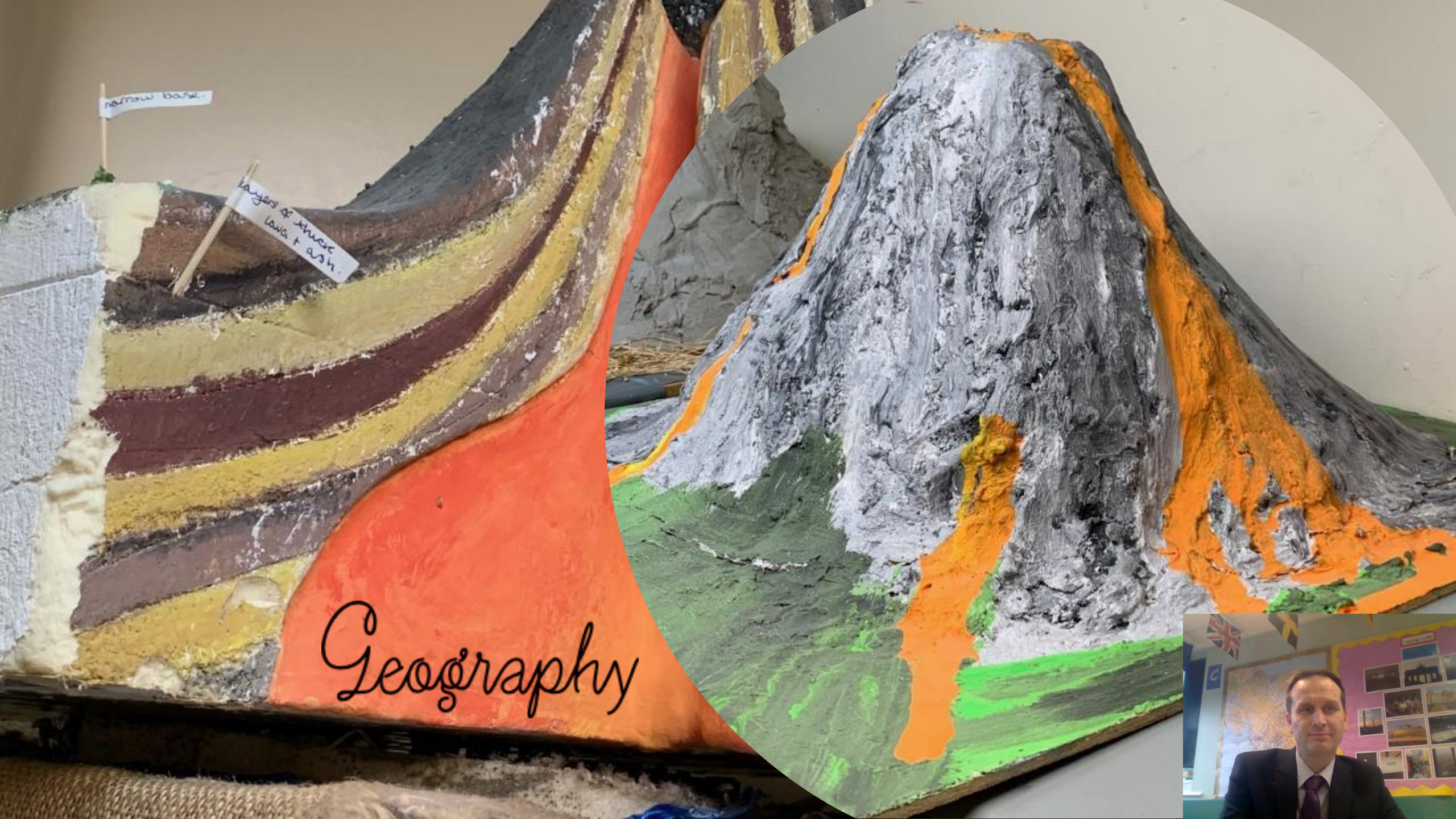




Geography





narrow base

layers of thick
lava + ash

Geography



Key Stage Three Geography

Year 7

- Geographical Skills
- Development and Coasts
- The United Kingdom
- Japan
- Russia
- Settlement

Year 8

- Crime
- Brazil
- Weather and Flooding
- Geology
- Restless Earth
- Africa

Year 9

- Biomes and Ecosystems
- Population and Globalisation
- Country Case Study: Australia
- City Case study: Berlin
- Rivers
- Hot Deserts
- Glaciation



GCSE GEOGRAPHY (AQA course)

At Nidderdale High School we follow a GCSE Geography course with both Physical Geography and Human Geography, this course also involves fieldwork studies in an urban and physical environment.

We have traditionally investigated flood management in York and a local river study.



GCSE Geography Specification

Living with the physical environment

- Section A: The challenge of natural hazards
- Section B: The living world
- Section C: Physical landscapes in the UK

Challenges in the human environment

- Section A: Urban issues and challenges
- Section B: The changing economic world
- Section C: The challenge of resource management

Geographical Applications

Section A: Issue evaluation

Section B: Fieldwork

Geographical skills

Geographical skills